

PRISMÉ

SALON

Personal Tabletop Reflector · Full Specification & Ecosystem Positioning

Confidence begins with private clarity. / Status: Patent Pending

1. PRISMÉ SALON — Positioning

PRISMÉ SALON is a personal tabletop reflector designed for private environments such as bedrooms, hotel rooms, dressing areas, and personal vanities.

SALON occupies the space between ÉCLAT and ATELIER, delivering a stable, elevated reflection experience without the scale or professional intensity of ATELIER PRO.



Confidence begins
Your private clarity.
PRISMÉ Salon



PRISMÉ SALON — private clarity in personal space.

2. Design Philosophy

SALON follows the same Maison discipline as all PRISMÉ reflectors:

- Mirror-first behavior — reflection always precedes technology
- Calm presence — no visual aggression or distraction
- Trusted posture — a mirror that listens before it speaks

SALON is designed to feel permanent and reassuring, not performative.



SALON — stable, composed, and intentionally quiet.

3. Physical Architecture

Form factor: Tabletop oval reflector

Mounting: Weighted base for stability

Stem: Integrated single-piece support

Finish: Soft-touch luxury polymer with metallic accents

Orientation: Fixed portrait orientation

Footprint: Compact bedside and vanity-friendly dimensions



SALON — balanced architecture with permanent presence.

4. Mirror, Light & Camera

SALON features a distortion-free mirror surface surrounded by a continuous, uniform light ring. The light provides soft, even illumination calibrated for skin tones and close-range interaction.

An integrated imaging module is positioned discreetly within the mirror assembly. The camera remains inactive unless explicitly activated by the user.



Uniform illumination and truthful reflection.

5. Interaction Model

SALON supports limited on-mirror interaction for essential functions only. All advanced features, sessions, and settings are managed through the PRISMÉ mobile application.

This separation ensures the mirror remains visually calm while functionality scales through the app.

6. In-App Reflection vs SALON

SALON Hardware:

- True optical mirror
- Stable lighting and posture
- Anchored, private environment

PRISMÉ App Reflection:

- Camera-based fallback
- Temporary and contextual
- Secondary to hardware experience

In-app reflection is available for continuity but is not promoted as a replacement for SALON.

7. Privacy & Trust

SALON enforces privacy structurally:

- No autonomous recording
- Explicit user activation required
- Visible operational state indicators
- No background data capture

Trust is inherent to the object, not configurable.

8. Intended Use Scenarios

- Daily makeup and skincare routines
- Remote consultations via PRISMÉ app
- Private preparation before events
- Hotel and hospitality premium placement

9. Relationship to the PRISMÉ Ecosystem

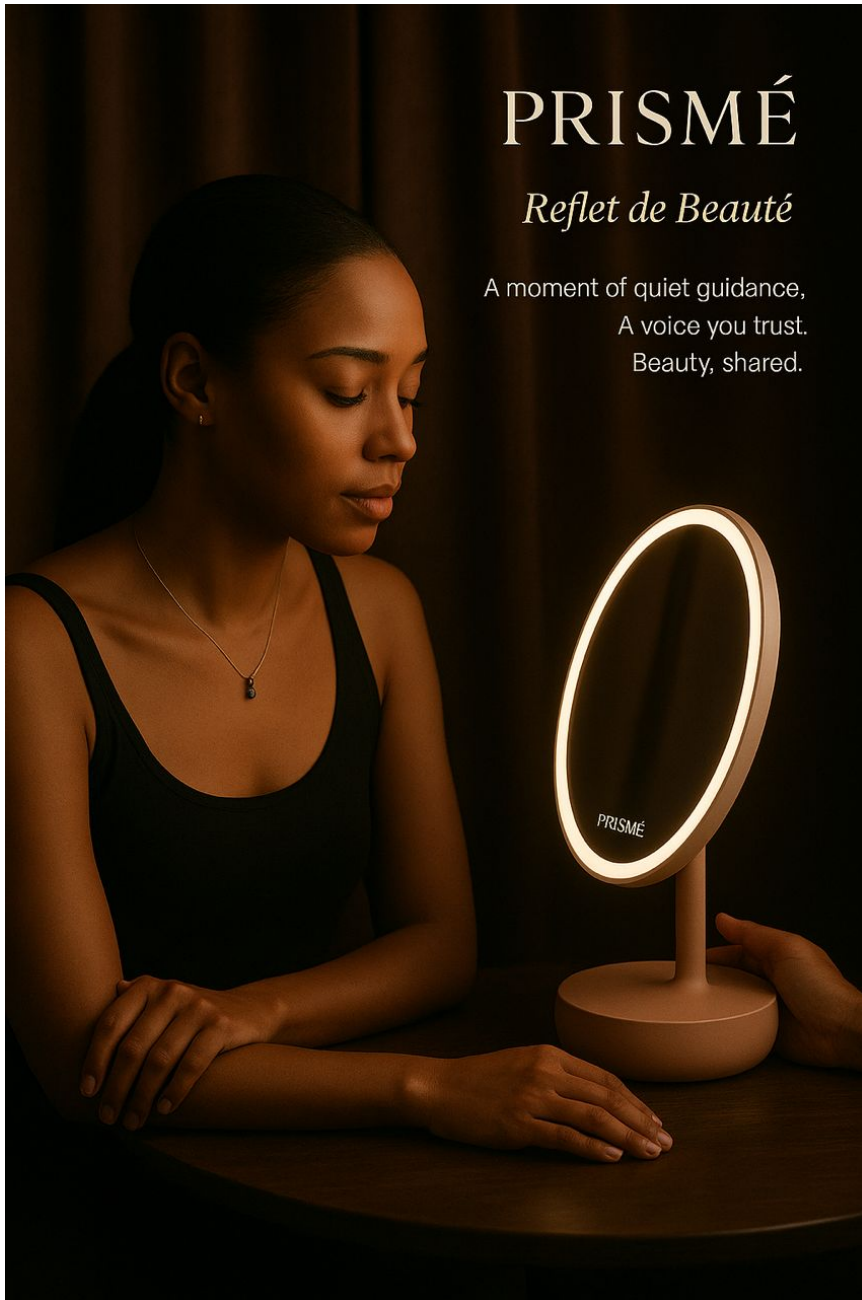
ÉCLAT: Mobile, handheld intimacy

SALON: Personal tabletop clarity

ATELIER: Dedicated private space

ATELIER PRO: Studio and professional environments

SALON represents the emotional center of the PRISMÉ ecosystem.



PRISMÉ

Reflét de Beauté

A moment of quiet guidance,
A voice you trust.
Beauty, shared.

PRISMÉ SALON — beauty begins in presence.